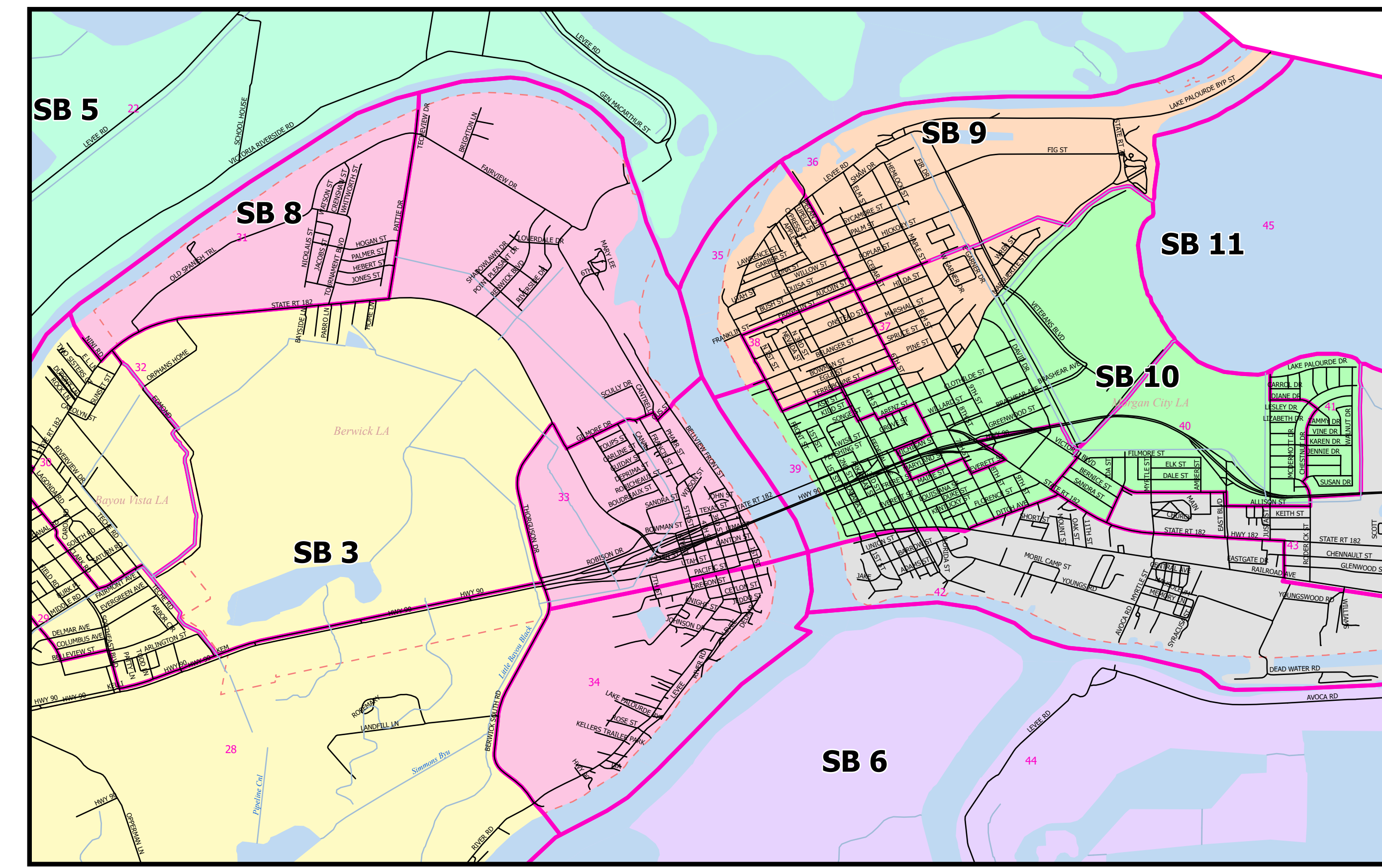
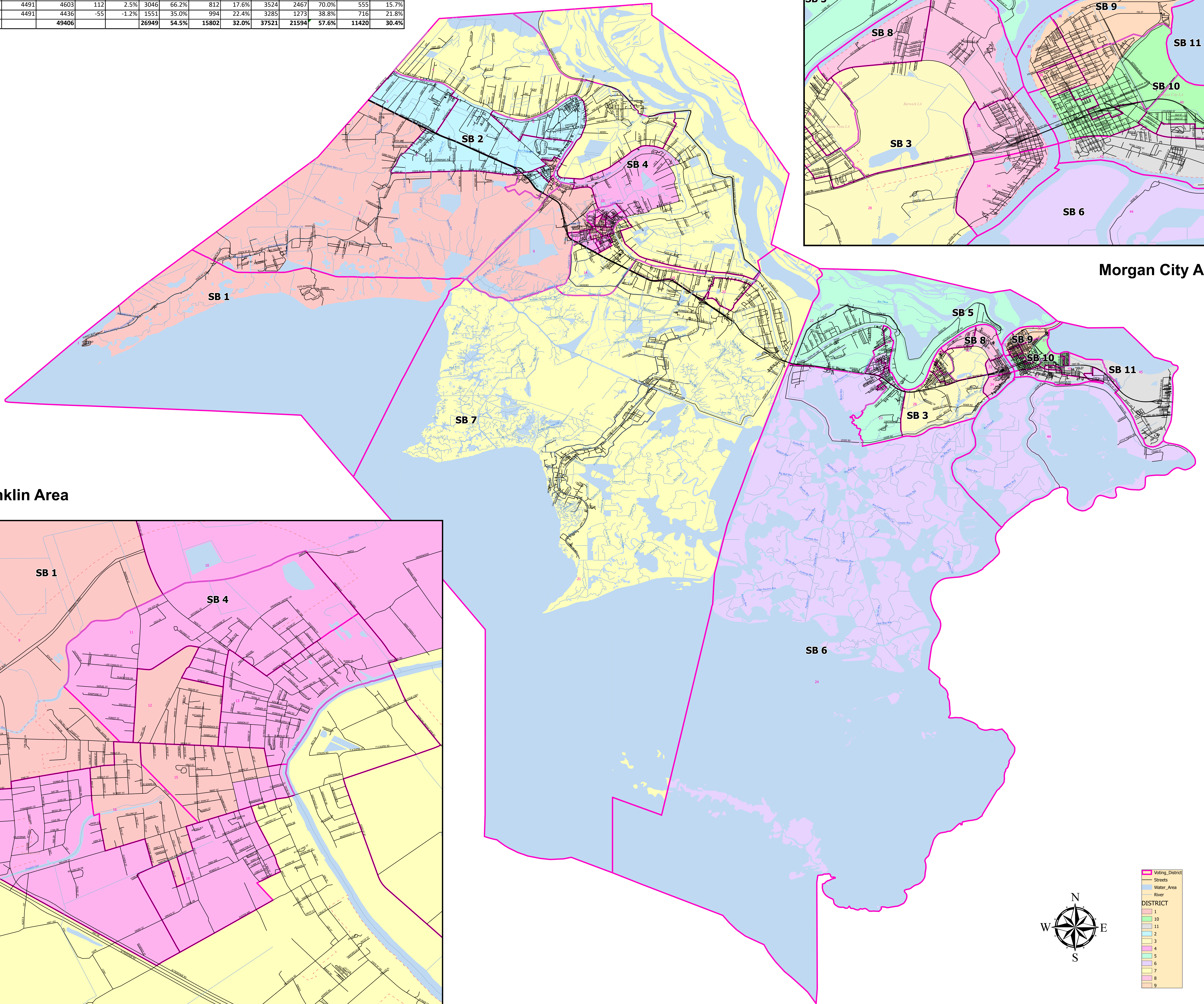


St. Mary Parish School Board Plan A Demographics													
District	Ideal	Population	Deviation	% Deviation	White	% White	NH AP Blk	% NH AP Blk	18+ Pop	18+ Wht	% 18+ Wht	NH18+ AP Blk	% NH18+ AP Blk
1	4491	4234	-257	-5.7%	1690	39.9%	2247	53.1%	3265	1392	42.6%	1662	50.9%
2	4491	4605	114	2.5%	1688	36.7%	2280	49.5%	3618	1404	38.8%	1823	50.4%
3	4491	4613	122	2.7%	3540	76.7%	466	10.1%	3532	2814	79.7%	305	8.6%
4	4491	4629	138	3.1%	1668	36.0%	2669	57.7%	3534	1432	40.5%	1923	54.4%
5	4491	4363	-128	-2.9%	2949	67.6%	988	22.6%	3331	2318	69.6%	718	21.6%
6	4491	4361	-130	-2.9%	1661	38.1%	2354	54.0%	3138	1265	40.3%	1636	52.1%
7	4491	4603	112	2.5%	2884	62.7%	1381	30.0%	3588	2302	64.2%	1039	29.0%
8	4491	4382	-109	-2.4%	3392	77.4%	531	12.1%	3245	2595	80.0%	323	10.0%
9	4491	4577	86	1.9%	2880	62.9%	1080	23.6%	3461	2332	67.4%	720	20.8%
10	4491	4603	112	2.5%	3046	66.2%	812	17.6%	3524	2467	70.0%	555	15.7%
11	4491	4436	-55	-1.2%	1551	35.0%	994	22.4%	3285	1273	38.8%	716	21.8%
<b>Totals</b>		<b>49406</b>			<b>26949</b>	<b>54.5%</b>	<b>15802</b>	<b>32.0%</b>	<b>37521</b>	<b>21594</b>	<b>57.6%</b>	<b>11420</b>	<b>30.4%</b>

# St. Mary Parish School Board Plan A



Morgan City Area



Franklin Area

