

RESTORE ACT Direct Component Multiyear Plan Narrative

Department of the Treasury

OMB Approval No. 1505-0250

Directions: Use this form for the Initial Multiyear Plan and any subsequent amendments to an accepted Multiyear Plan. For amendments, include only new and/or materially modified activities.

Multiyear Plan Version (Initial or Amendment Number):	Initial
Date of Initial Multiyear Plan Acceptance:	2021
Date of Last Multiyear Plan Acceptance:	2021

Eligible Applicant Name:	St. Mary Parish Government
Name and Contact Information of the Person to be contacted (POC) on matters concerning this Multiyear Implementation Plan:	
POC Name:	Henry "Bo" LaGrange
POC Title:	Chief Administrative Officer
POC Email:	hlagrange@stmaryparishla.gov
POC Phone:	337-828-4100 x 500

NARRATIVE DESCRIPTION:

1. A description of each activity, including the need, purpose, objective(s), milestones and location. Include map showing the location of each activity.

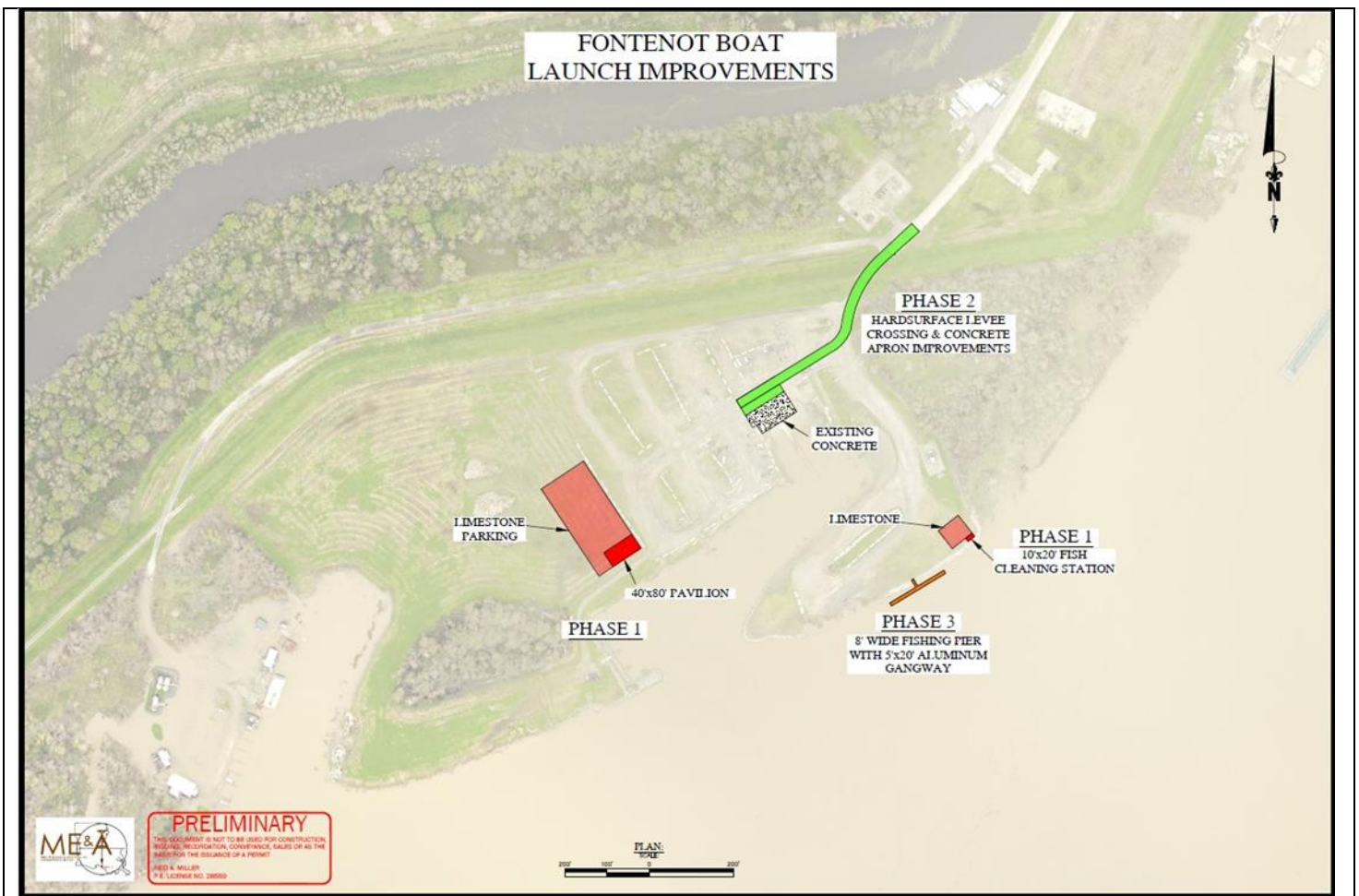
Project 1: Fontenot Boat Launch Improvements

The Fontenot Boat Launch is located on the west bank of the Atchafalaya River at the intersection with the Gulf Intracoastal Waterway. The location provides a central location for access to the Atchafalaya Basin for freshwater fishing and the Gulf of Mexico for saltwater fishing. The facility is used by recreational and commercial fishermen, hunters, industry, and government agencies and has continuously undergone improvements to provide all users with convenient, safe access to the Atchafalaya River and adjacent areas.

- **Phase I** – The first phase of the Fontenot Boat Launch Improvements includes the construction of a 40'x80' steel frame pavilion, RV Parking, and a 10'x20' steel frame fish cleaning station. This infrastructure is required to support and expand recreational fishing needs at this location and provide protection from rain and sun. The pavilion is planned as an open-air facility with concrete foundation that will be used for fishing tournaments and a central gathering point for sign-in, weigh-in, post-fishing gatherings, award distribution, entertainment, etc. The pavilion can also be used as a muster point for law enforcement and emergency response teams during floods, oil spills, hurricanes, or other natural disasters. The fish cleaning station will be used by recreational fishermen to clean their catch prior to leaving the facility making it easier to dispose of carcasses in the waterway rather than disposing of them in garbage cans, dumpsters, etc. This improvement will also pair with the pavilion to support and expand recreational fishing, tournaments, etc.
- **Phase II** – The second phase of the Fontenot Boat Launch Improvements would be to construct a hard surfaced access roadway crossing the Atchafalaya Basin flood protection levee. The current access roadway is aggregate surfacing which requires continuous maintenance to repair scour areas and to maintain adequate condition for vehicular traffic. The aggregate surfacing in this location is on a steep slope and is susceptible to scour due to rain and water being emptied from boats and their respective

trailers. The proposed improvements would connect to the existing concrete roadway (River Road) and continue to the boat launch apron. Also included in this phase would be an expansion of the existing concrete boat launch apron to extend the staging area. This is also an effort to reduce maintenance and scour due to rainfall runoff and water from boat launching and retrieving operations.

- **Phase III** – The third phase of the Fontenot Boat Launch Improvements would be to construct a timber fishing pier to allow fishing access to the Atchafalaya River for those recreational anglers that do not have boats. This project is an effort to continue to upgrade the overall facility and accommodate all levels of recreational users. The fishing pier would be constructed to be ADA accessible to allow those with decreased mobility the opportunity to fish or enjoy the outdoors from an accessible location.
- **Need** – The project is needed to improve and increase recreational use for a different class of users – that being for recreational vehicles (RVs). The current facility has a high user rate of recreational boaters to participate in fishing and hunting within the Atchafalaya Basin, Floodway, and marshes, including the Atchafalaya Wildlife Management Area. The inclusion of RV facilities at this location will provide a convenient crossover for those users with RVs and boats looking for overnight accommodations.
- **Purpose** – The purpose of this project is to provide a convenient facility for boaters who also have RVs, though could also be used by RV users looking for waterfront facilities.
- **Objective** – The objective of this project is to provide 14 RV sites with water, sewer and electrical hookups. RV sites and the access roadway will be constructed of compacted aggregate surfacing.
- **Project Milestones** - Construction documents finalized and plans advertised for public bids; Award Construction contract and construction commencement; Complete Construction
- **Project Location** – See below



Project 2: Quintana Boat Launch Improvements

The Quintana Boat Launch is located just north of Cypremort Point on the west side of La. Hwy. 319 and provides direct access to Vermilion Bay and the Gulf of Mexico. The facility is used by recreational and commercial fishermen, hunters, industry, and government agencies and has continuously undergone improvements to provide all users with convenient, safe access to the waters around Cypremort Point. The proposed improvements include reconstruction of the timber docks, portions of the concrete boat launch and the aggregate surface entry/exit area. The timber docks, boat ramp apron and access area are being inundated on a regular basis due to above average water levels, subsidence, and local weather conditions. When this inundation occurs, the docks and boat launch become slippery, and it becomes unsafe and difficult to launch and retrieve boats. The proposed improvements are to reconstruct and elevate the timber docks, elevate the upper end of the concrete boat launch, elevate the boat launch apron, and elevate the aggregate entry/exit area.

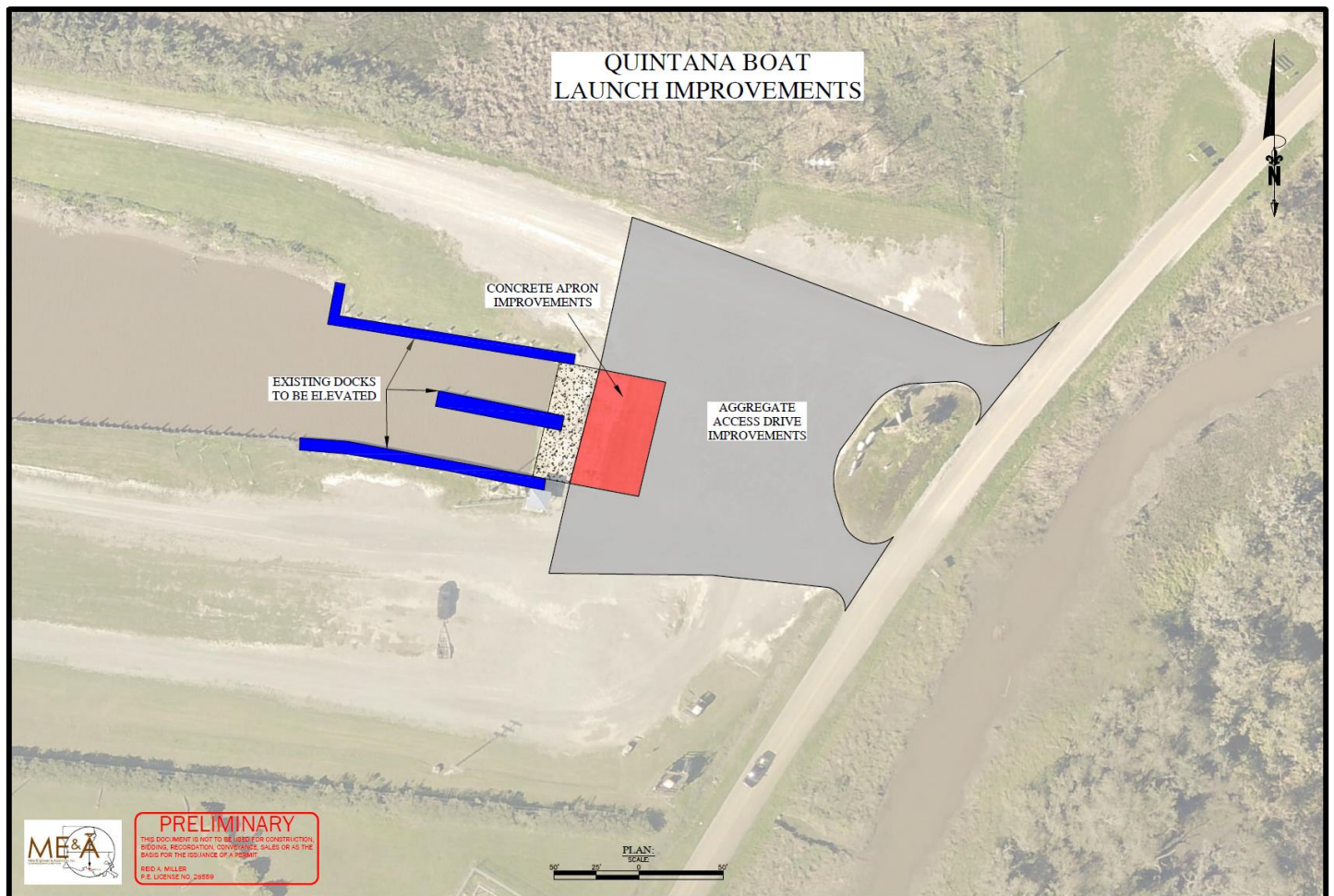
Need: The project is needed to improve the existing boat ramp and timber docks. The existing docks are of timber construction and due to the extreme environment (sun, water, waves, etc.) are experiencing typical deterioration common to this type of facility. Also during high tides, the docks and a large portion of the boat ramp and parking are going underwater, making the facility unusable and/or unsafe.

Purpose: The purpose of this project is to renovate the timber docks to include replacing the timber supports, decking, etc. and raising the elevation to prevent inundation at high tide. The project will also include raising a portion of the concrete boat ramp and parking areas to prevent inundation at high tide.

Objectives: The objective of this project is to renovate and elevate 2358 square feet of timber dock, reconstruct 2340 square feet of concrete boat ramp and elevate 0.72 acres of limestone parking.

Milestones: Construction documents finalized and plans advertised for public bids; Award Construction contract and construction commencement; Complete Construction

Location:



Project 3: Morgan City Coastal Resilience Laboratory

St. Mary Parish will partner with the Water Institute of the Gulf (the Institute) in the development of a strategic plan for the development of a coastal resilience laboratory in Morgan City, Louisiana. In 2018, citizens and decision-makers in St. Mary Parish, Louisiana commissioned the Urban Land Institute (ULI) to identify strategies to enhance job creation and reduce population loss throughout St. Mary Parish and the Tri-City Region, especially Morgan City and Berwick. The ULI determined that the creation of a coastal resilience laboratory should be a key long-term goal for Morgan City and the region. Morgan City is an ideal inhabited location for the establishment of such a laboratory, given the city's rich history of technological innovation, land, water and topographical features for piloting projects for implementing, commercialization, and demonstration, and low levels of environmental risk relative to surrounding communities. The coastal, riverine, and basin locale presents the setting for authentic entrepreneurial innovation and application of the work of academic and partner institutions.

To support St. Mary Parish in the development of a coastal resilience laboratory, the Institute proposes to build stakeholder consensus and develop a strategic plan using the PrOACT (Problem, Objectives and Measures,

Alternatives, Consequences, and Trade-offs) Structured Decision-Making (SDM) framework. PrOACT is a method for creating a clear and concise summary of a problem and the possible solutions to it so that decision-makers can clearly see the consequences of each choice. The framework helps define the problem under consideration, determine who needs to be involved in the process of developing alternatives (which also helps create a shared understanding of how people with different interests and perspectives view different options), and compare the trade-offs created by each alternative solution to the problem.

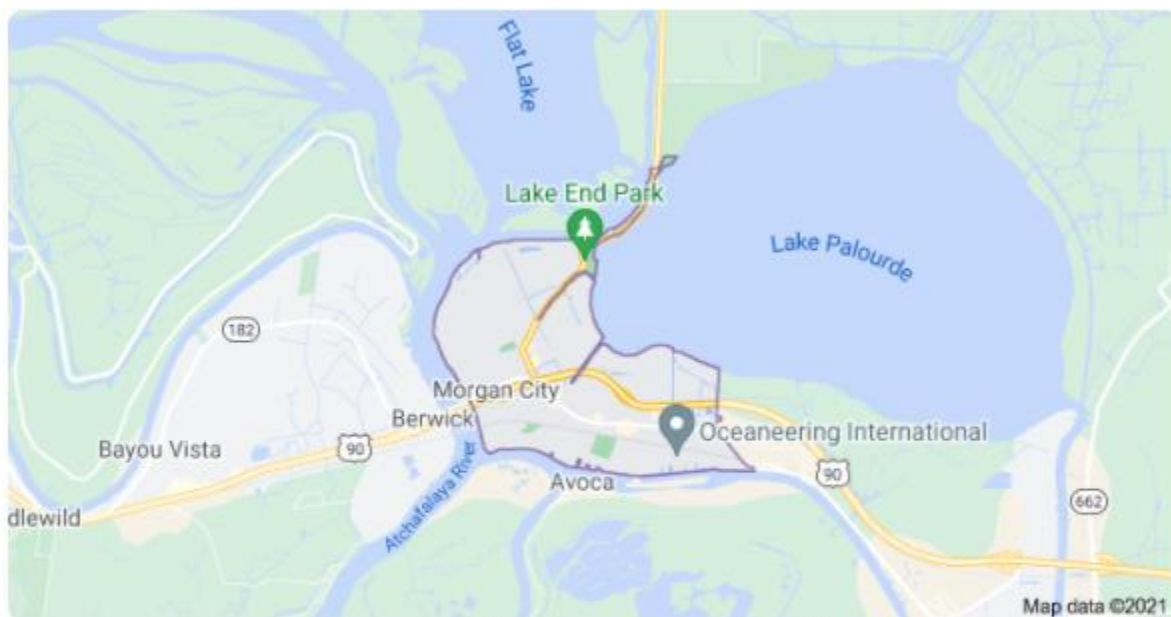
PROJECT OBJECTIVES

Objective 1: Evaluate the state of the science/information related to the Parish and Tri-State Region's vulnerability to shocks (extreme events/disasters) and stresses (long-term social, economic, environmental issues).

Objective 2: Work with the Parish and other technical stakeholders to identify and evaluate economic development programs and priorities throughout the Parish and Tri-State Region and identify strength and weaknesses related to local and regional coordination and communication

Objective 3: Work with the Parish and stakeholders to identify management alternatives that are economically feasible and acceptable and develop a long-term strategic plan for the development of the coastal resilience laboratory.

Location:



Morgan City
Louisiana 70380

2. How the applicant made the multiyear plan available for 45 days for public review and comment, in a manner calculated to obtain broad-based participation from individuals, businesses, Indian tribes, and non-profit organizations, such as through public meetings, presentations in languages other than English, and postings on the Internet. The applicant will need to submit documentation (e.g., a copy of public notices) to demonstrate that it made its multiyear plan available to the public for at least 45 days. In addition, describe how each activity in the multiyear plan was approved after consideration of all meaningful input from the

public and submit documentation (e.g., a letter from the applicant's leadership approving submission of the multiyear plan to Treasury or a resolution approving the applicant's multiyear plan).

The St. Mary Parish Government held a public meeting on December 16, 2021 that was advertised in the Parish's official journal. Following the meeting, the plan was posted to the Parish's website and made available through a consultant for 45 days who was responsible for compiling and incorporating comments. Following the incorporation of all comments, the Parish Council approved the plan.

Public comments received will go here.

3. How each activity included in the applicant's multiyear plan narrative meets all the requirements under the RESTORE Act, including a description of how each activity is eligible for funding based on the geographic location of each activity and how each activity qualifies for at least one of the eligible activities under the RESTORE Act.

Project 1: Fontenot Boat Launch Improvements

Project 1 is located in St. Mary Parish within the Gulf Coast Region and is eligible for Direct Component funding under the infrastructure projects benefitting the promotion of tourism in the Gulf Coast Region, including promotion of recreational fishing. The project is eligible because it includes planning for improvements and construction of public facilities to support economic development. This project will be implemented by the St. Mary Parish Government.

Project 2: Quintana Boat Launch Improvements

Project 2 is located in St. Mary Parish within the Gulf Coast Region and is eligible for Direct Component funding under the infrastructure projects benefitting the promotion of tourism in the Gulf Coast Region, including promotion of recreational fishing. The project is eligible because it includes planning for improvements and construction of public facilities to support economic development. The project will be implemented by the St. Mary Parish Government.

Project 3: Morgan City Coastal Resilience Laboratory

Project 3 is located in St. Mary Parish within the Gulf Coast Region and is eligible for Direct Component funding under the infrastructure projects benefitting workforce development and job creation. The project is eligible because it includes the planning of a facility to support economic development by enhancing job creation and preventing population loss. The project will be implemented by the St. Mary Parish Government :

4. Criteria the applicant will use to evaluate the success of the activities included in the multiyear plan narrative in helping to restore and protect the Gulf Coast Region impacted by the Deepwater Horizon oil spill.

Project 1: Fontenot Boat Launch Improvements: The success of this activity will be measured by the completion of upgrades to the Fontenot Boat Launch and the number of new RV users.

Project 2: Quintana Boat Launch Improvements: The success of this activity will be measured by the reconstruction and improved safety of the Quintana Boat Launch.

Project 3: Morgan City Coastal Resilience Laboratory: The success of this activity will be measured by the planning, evaluation, and development of a resilience laboratory.

5. How the activities included in the multiyear plan narrative were prioritized and list the criteria used to establish the priorities.

The projects included in the Multiyear Plan were evaluated and prioritized by the St. Mary Parish Government. Projects were selected by the following criteria:

Potential Positive Impacts

Project Need

Constructability of the Project

6. If applicable, describe the amount and current status of funding from other sources (e.g., other RESTORE Act contribution, other third party contribution) and provide a description of the specific portion of the project to be funded by the RESTORE Act Direct Component.

The projects included in the Multiyear Plan will be 100% funded with RESTORE Act funds.